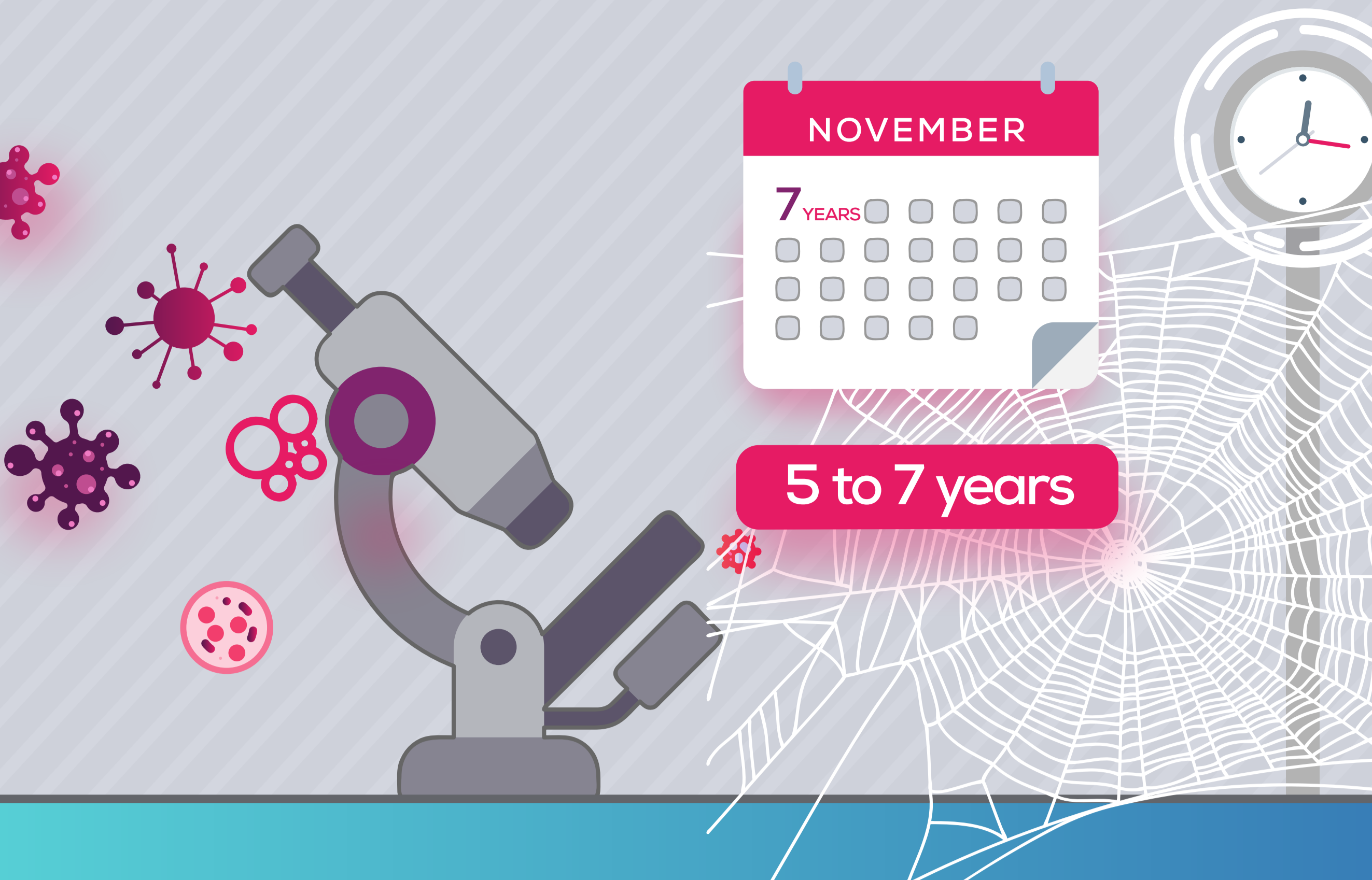


Unmet needs in Access to Appropriate Care in NETs

NETs are difficult to diagnose



5 to 7 years

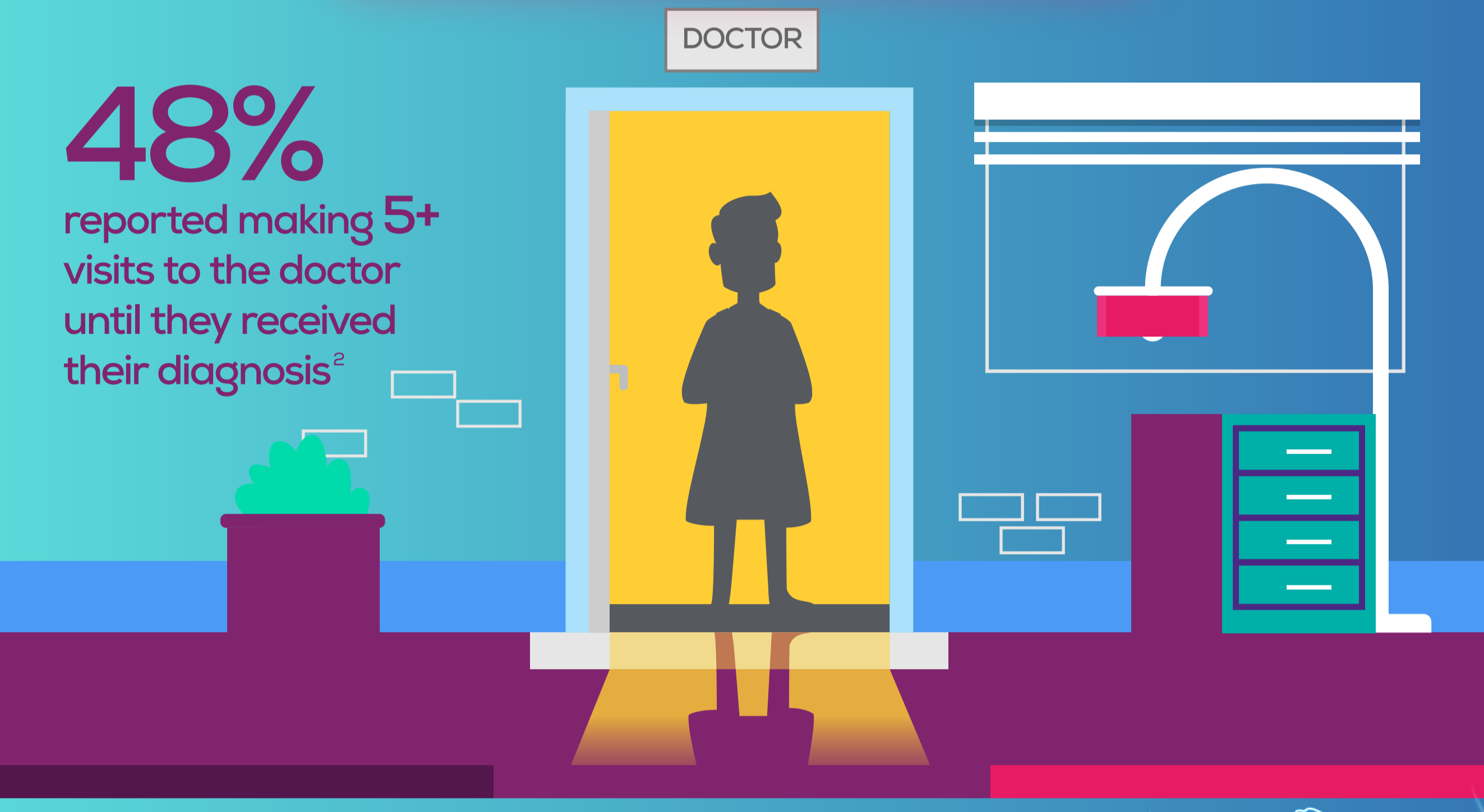
45% of patients reported not receiving NETs as first diagnosis¹

ZEBRA

Receiving the correct diagnosis

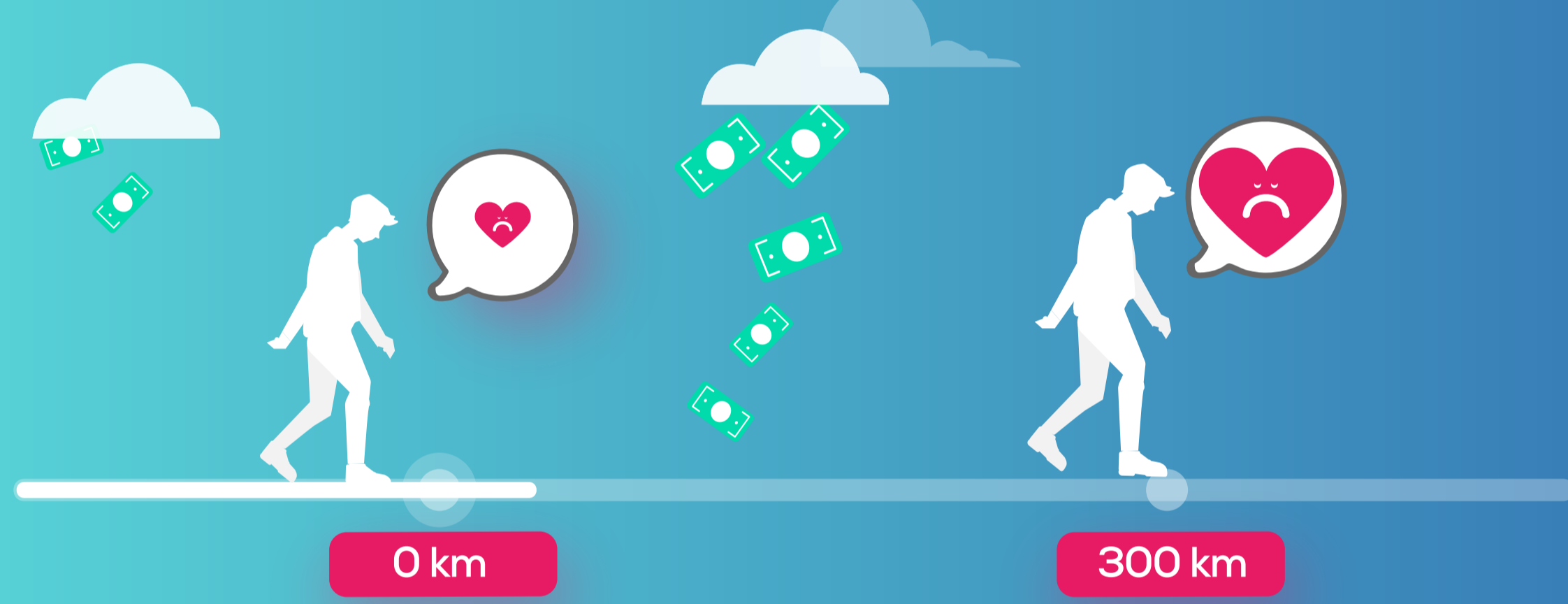
DOCTOR

48% reported making 5+ visits to the doctor until they received their diagnosis²

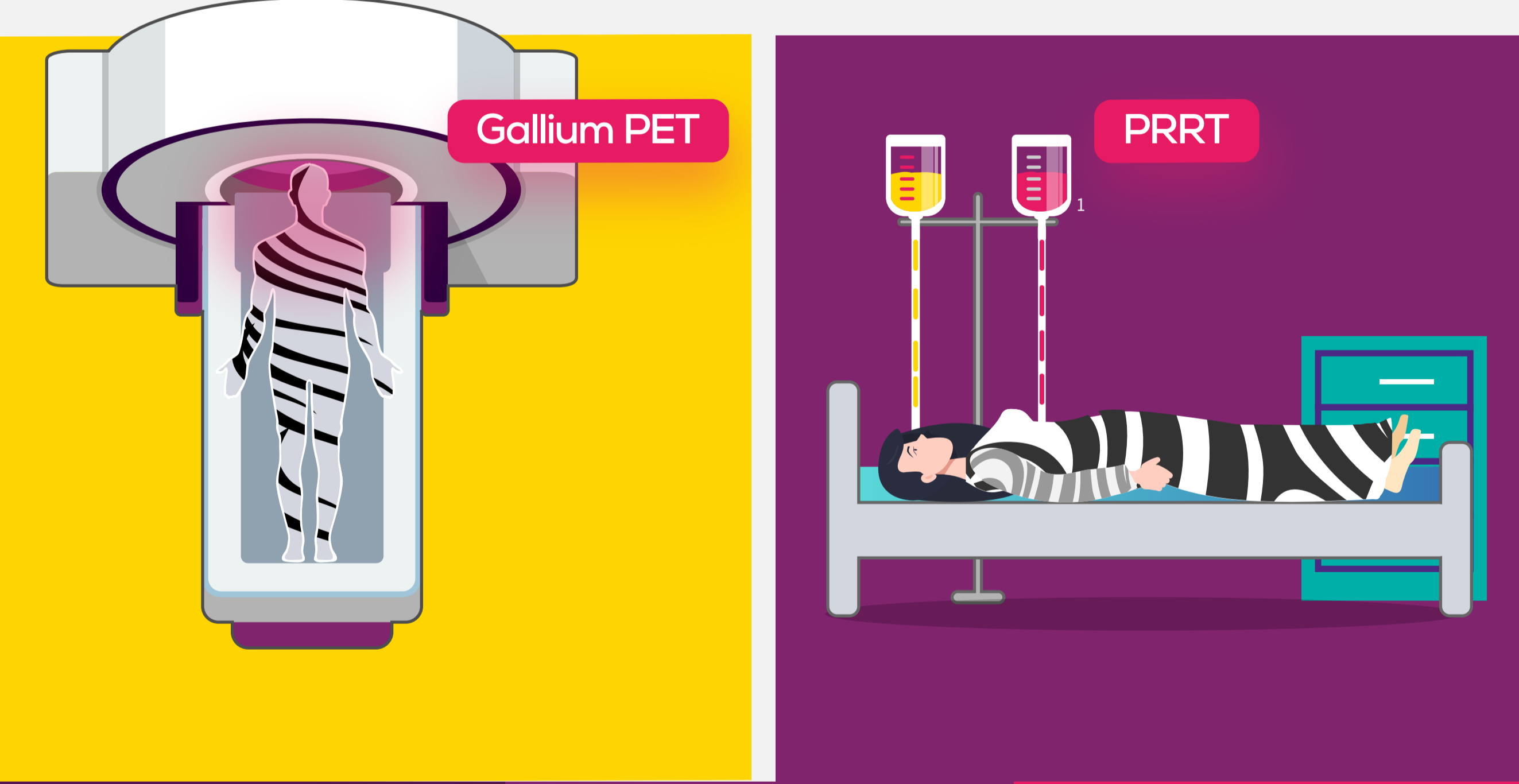


Almost 50% of all patients have travelled more than 300 km/186 miles to see a NETs specialist³

This impacts on patient outcomes
Huge financial and emotional stress to patients and families



Access to gold standard diagnostics and treatment universally is vital



NET cancer is a complicated disease, it needs



"If you don't suspect it you can't detect it"



References:

- [1] Journal of Global Oncology, June 2016, "Patient-Reported Burden of a Neuroendocrine Tumor (NET) Diagnosis: Results from the First Global Survey of Patients with NETs"
- [2] Journal of Global Oncology, June 2016, "Patient-Reported Burden of a Neuroendocrine Tumor (NET) Diagnosis: Results from the First Global Survey of Patients with NETs"
- [3] INCA Unmet Needs in NETs Assessment Survey among Key Stakeholders, 2017